



2
0
2
6

UNIVERSITY OF PORTSMOUTH

CENTRE HANDBOOK 2026

WELCOME

Thanks for your interest in our school. Here you'll find more information about our accommodation, canteen, and facilities. If you have any specific requests before your visit, please don't hesitate to contact us on WhatsApp : +44 7442035545.

We look forward to welcoming you this summer!

The British Learning Academy is a British Council accredited school offering different English courses, including project-based and business-oriented programmes for individuals, groups, and companies. Within the historic city of Portsmouth, we offer a range of courses alongside social and cultural events and excursions.



**BRITISH
LEARNING
ACADEMY**



Accredited by the



for the teaching
of English in the UK

OVERVIEW

Founded in 1992 as a modern university (with origins dating back to 1908), the University of Portsmouth blends contemporary facilities with a vibrant city-centre location. Just a short walk from Portsmouth Harbour and the seafront, the campus is spread across the city, offering students the opportunity to experience life in a dynamic and historic maritime setting on the South Coast.

Modern classrooms, lecture theatres, and recreational spaces provide an inspiring learning environment.

Safety is a top priority, with secure halls, CCTV, and key-coded access to all residences. Accommodation and classrooms are only a 10-minute walk apart, and students are always accompanied by our staff, ensuring every journey is safe and reassuring.

Accommodation is in comfortable student halls, creating a welcoming, community-style atmosphere. Beyond their residence, students are immersed in the lively city, with cafés, shops, cultural landmarks, and the beach all within easy reach.

At this centre, we are delighted to welcome groups of students aged 11–17, providing a safe, enriching, and memorable experience.

A map of the University of Portsmouth is included on the final page of this document.

LOCATIONS & USEFUL INFO

03

Address

University of Portsmouth
Mercantile House
Hampshire Terrace
Portsmouth
Hampshire
PO1 2EG

Rees Hall (University of
Portsmouth)
Southsea Terrace
Southsea
Portsmouth
Hampshire
PO5 3AP

Airport Transfers

Southampton Airport (SOU): 30
minutes
London Gatwick (LGW): 1 hour
15 minutes
London Heathrow (LHR): 1
hour 30 minute

Amenities

Post Office

Slindon Street, Portsmouth, PO1 1AB

Supermarket

Tesco Express, PO1 1BU

ATM

118 Commercial Road, PO1 1EQ

Pharmacy

Boots Pharmacy, PO1 1DD

Hospital

Queen Alexandra Hospital, PO6 3LY

Train Station

Portsmouth & Southsea Station, PO1
1EQ

Dentist

Colosseum Dental, 56 High Street,
PO1 2TT

Taxi Companies

Andi Cars – +44 23 9282 9999
City Wide Taxis – +44 23 9283 3333

ACCOMMODATION

04

Rees Hall provides comfortable residential accommodation directly on the seafront, within walking distance of the University facilities. The residence offers a mix of single and twin en-suite rooms. Students can access their rooms safely using individual keys.

Room Allocation

Students are allocated rooms according to age, gender, and group wherever possible. Specific requests, such as friends wishing to share, are considered when arranging allocations. Group Leaders are accommodated in the same hall as their students to ensure support and supervision.

Laundry

Laundry services are located on the Ground Floor, and run by Circuit Laundry services. Full operating instructions are shown on the screen and by the posters in the laundry room.



Common Rooms

The common rooms at Rees Hall are bright, comfortable spaces designed for students to relax and spend time together. They are furnished with sofas and tables, creating a welcoming atmosphere for socialising after lessons. These shared areas are open throughout the day and evening, giving students a safe, friendly place to unwind under staff supervision.

Housekeeping

Rooms are cleaned once a week, bedding and towels are also changed weekly. Students can request clean bedding or towels at any time.



HALLS

04

Portsmouth University has provided the British Learning Academy with two accommodation options. **Rees Hall** holds our canteen and common spaces, alongside our **ensuite** rooms. **Burrell House** is our **shared bathroom** option, just around the corner from Rees Hall.

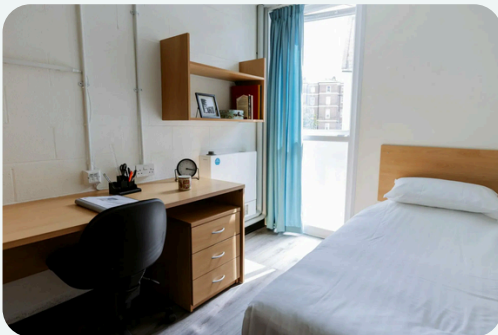
REES HALL

1ST JULY-27TH AUGUST

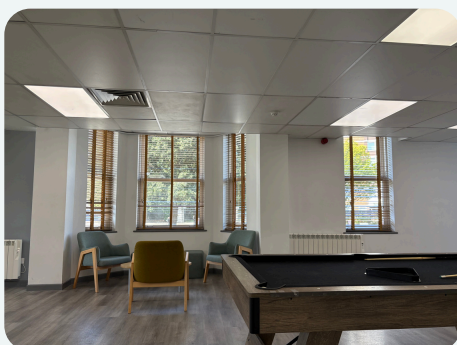


BURRELL HOUSE

28TH JUNE-27TH AUGUST



COMMON SPACES - REES HALL



FACILITIES

Ravelin Sports Centre

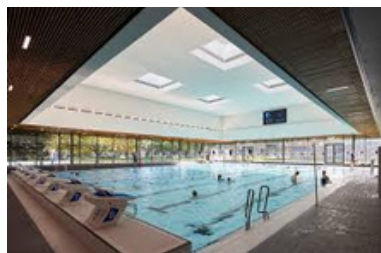
Students in Portsmouth have access to the brand-new Ravelin Sports Centre, one of the most modern university sports facilities in the UK. Just a short walk from our classrooms and accommodation, it provides the perfect setting for safe, supervised afternoon activities.

- **Swimming Pool** – booked exclusively for our supervised sessions.
- **Sports Hall** – indoor space for basketball, football, and volleyball.
- **Studios** – ideal for dance, fitness, and group activities.
- **Climbing Wall** – available for supervised use.
- **Outdoor Pitches** – modern all-weather pitches for football and other team games.
- *Please note that students under the age of 18 are not permitted to use the gym*

All activities are run by our trained Activity Leaders, ensuring students enjoy sports and games in a safe, modern environment.

Watch their informative promo video:

<https://youtu.be/2l2DdZ6bU0M>



CANTEEN

The British Learning Academy provides full catering to our students. The timing are as follows:

Breakfast: 8:00-8:45

Lunch: 13:00- 13:45

Dinner: 19:00-19:45

At Rees Hall, students take their meals in the spacious on-site canteen, located on the ground floor of the building. Breakfast, lunch, and dinner are served every day, with a wide choice of hot and cold dishes to suit all tastes. Menus are balanced and varied, with vegetarian options always available and special dietary needs (allergies, religious or medical requirements) catered for on request.

The relaxed, self-service setting makes it easy for students to dine together, socialise, and recharge between lessons and activities. Staff are on hand to ensure everyone is well looked after and that mealtimes run smoothly.



TEACHING ROOMS

07

Library Teaching Rooms

- **Location** – Lessons take place in dedicated teaching rooms inside the University Library, a modern building in the centre of campus.
- **Facilities** – Bright, well-equipped classrooms with projectors, whiteboards, and comfortable seating, designed to support group work and interactive learning.
- **Proximity** – The Library is within easy walking distance of Rees Hall (around 10 minutes) and other campus facilities.
- **Supervision** – Students are always accompanied by our staff when moving to and from lessons.



STUDENT UNION

The University of Portsmouth Students' Union is at the heart of campus life and provides a safe, welcoming space for our groups. During summer, it serves as a central hub for social activities, meetings, and evening events.

- **Location** – Just a short walk from Rees Hall and teaching rooms.
- **Facilities** – Large indoor spaces suitable for discos, quiz nights, karaoke, and group gatherings.
- **Atmosphere** – A lively, student-focused environment where our learners can relax and socialise outside of lessons.

SECURITY

At the University of Portsmouth, the safety of our students is our top priority. The campus benefits from comprehensive CCTV coverage and a dedicated **24/7** on-site security team. Security staff and residential wardens provide a visible presence both during the day and overnight, ensuring support and reassurance at all times. Uniformed security patrols operate across campus, including through the night and at weekends.

Important Reminders

- The UK emergency services number is 999, or 112 across the EU (including the UK). For non-urgent police issues, you can call 101.
- The police are there to help and protect – students can always ask them for assistance.
- If you ever feel unsafe, do not respond – walk away and seek help immediately.
- Always take care when crossing roads – remember traffic drives on the left in the UK.
- Keep windows closed when you are not in your bedroom

Insurance and Valuables

Accommodation is secured with swipe card or key entry systems, but we strongly advise students not to bring expensive items. If valuables are brought, they should be covered by personal insurance, as neither the University nor BLA can accept responsibility for loss or damage.



UNIVERSITY OF PORTSMOUTH

